



www.seventides.com





*THOUGHTFULLY DESIGNED AND METICULOUSLY
PLANNED*

Seven Tides is a Dubai-based internationally oriented holding company established in 2004. Focusing on hospitality and real estate sectors. The result is a current portfolio of offerings in the gateway cities of London and Dubai.

Seven Tides' current portfolio of developments include Anantara The Palm Dubai Resort, Mövenpick Hotel Ibn Battuta Gate, Oceana Residences, DUKES Hotels in Dubai and London.

A WONDER OF THE WORLD SEEN FROM SPACE

Seven Palm is nestled on the trunk of Palm Jumeirah, opposite Nakheel Mall and next to DUKES The Palm Hotel; residents will be spoilt for choice with dining and entertainment options.

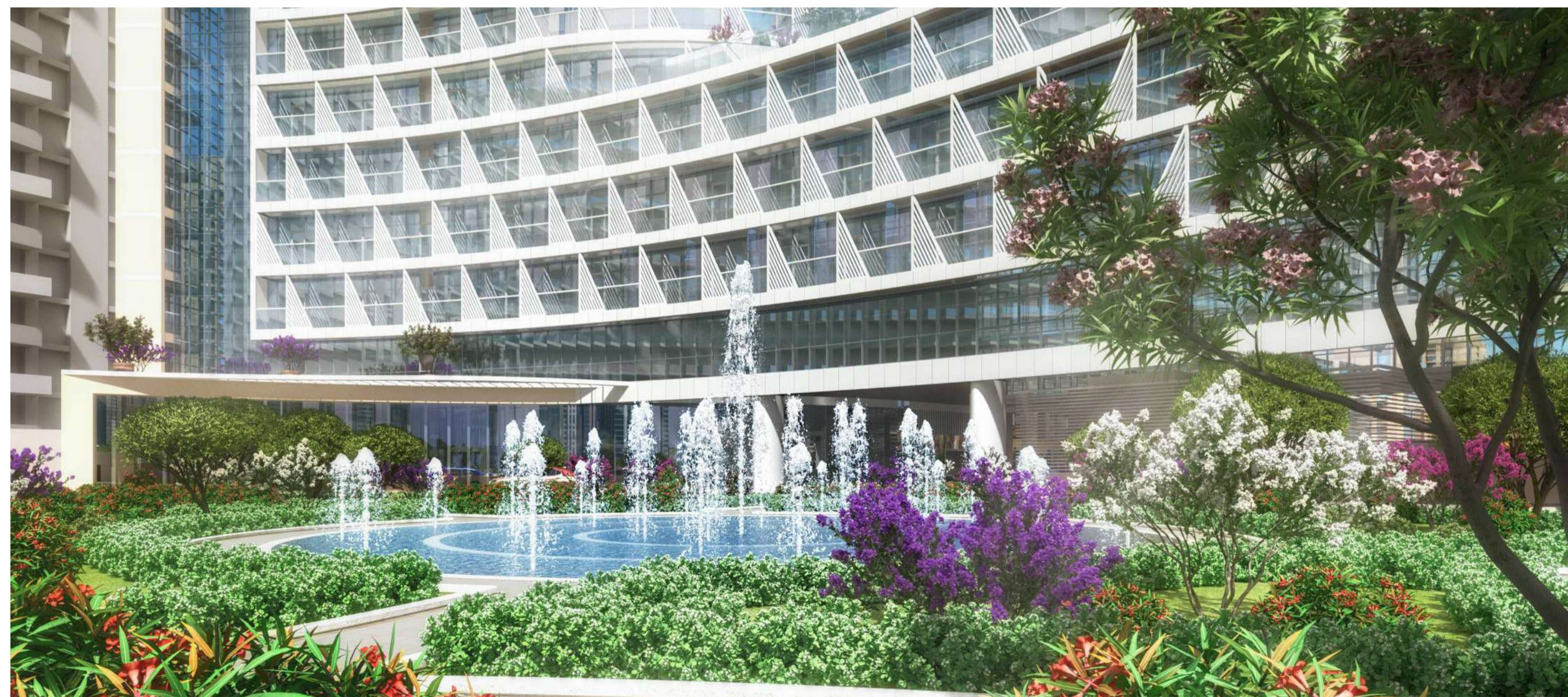
Nakheel Mall, Monorail, Al Itihad Park, Golden Mile and award-winning West 14th Steakhouse - just a short walk away.



AN ISLAND RETREAT

Seven Palm offers breathtaking views of the Arabian Ocean, Marina skyline, the iconic Burj Al Arab and the Dubai Eye.

A luxury hotel will be situated in the South tower of the Seven Palm project and the residences are located in the North tower. The towers are joined at the top by a stunning one of a kind infinity pool, with food & beverage outlets catering to the wants and needs of residents and visitors alike.



WAKE UP TO BREATHTAKING VIEWS

Seven Palm embodies urban island living close to the centre of Dubai.

Seven Palm is nestled in between five-star DUKES The Palm and Oceana Residences on one side and Fairmont The Palm on the other, offering uninterrupted views of the Marina skyline and Arabian Gulf.

Here you can dip your toes into the ocean and enjoy basking in the sun on the beach, island living at it's best!





THE PERFECT LOCATION

Seven Palm is nestled on the trunk of Palm Jumeirah, opposite Nakheel Mall and next to DUKES The Palm Hotel; residents will be spoilt for choice with dining and entertainment options.

Just 10 minutes' drive from Dubai Marina and Sheikh Zayed Road and 45 minutes from Dubai International Airport.

The perfect location with the perfect view in the perfect apartment.





SPACIOUS LAYOUTS WITH CONTEMPORARY INTERIORS

Seven Palm comprises of two towers connected by one of the biggest rooftop infinity pools within the region. This development is home to studio, one, two and three bedroom apartments and two duplex penthouses offering stunning views of the ocean. Penthouses are fitted with private pools and rooftop access.

Serene terraces sit elegantly within a dramatic setting of contemporary styled interiors complemented by floor-to-ceiling windows maximizing natural light.

Seven Palm truly is your exclusive beach-front address.





*A LIFE LIKE NO OTHER
SEVEN PALM OFFERS A PREMIUM
LIFESTYLE FOR EVERYONE.*

Amenities include an Olympic size rooftop swimming pool, fully equipped gymnasium, beach access, lush landscaped gardens and secure underground parking.

There will be a wide selection of dining options available right on your doorstep. A Sports Bar for you to cheer for your favorite team, indoor and outdoor rooftop restaurants for you to share special moments and create fond memories.



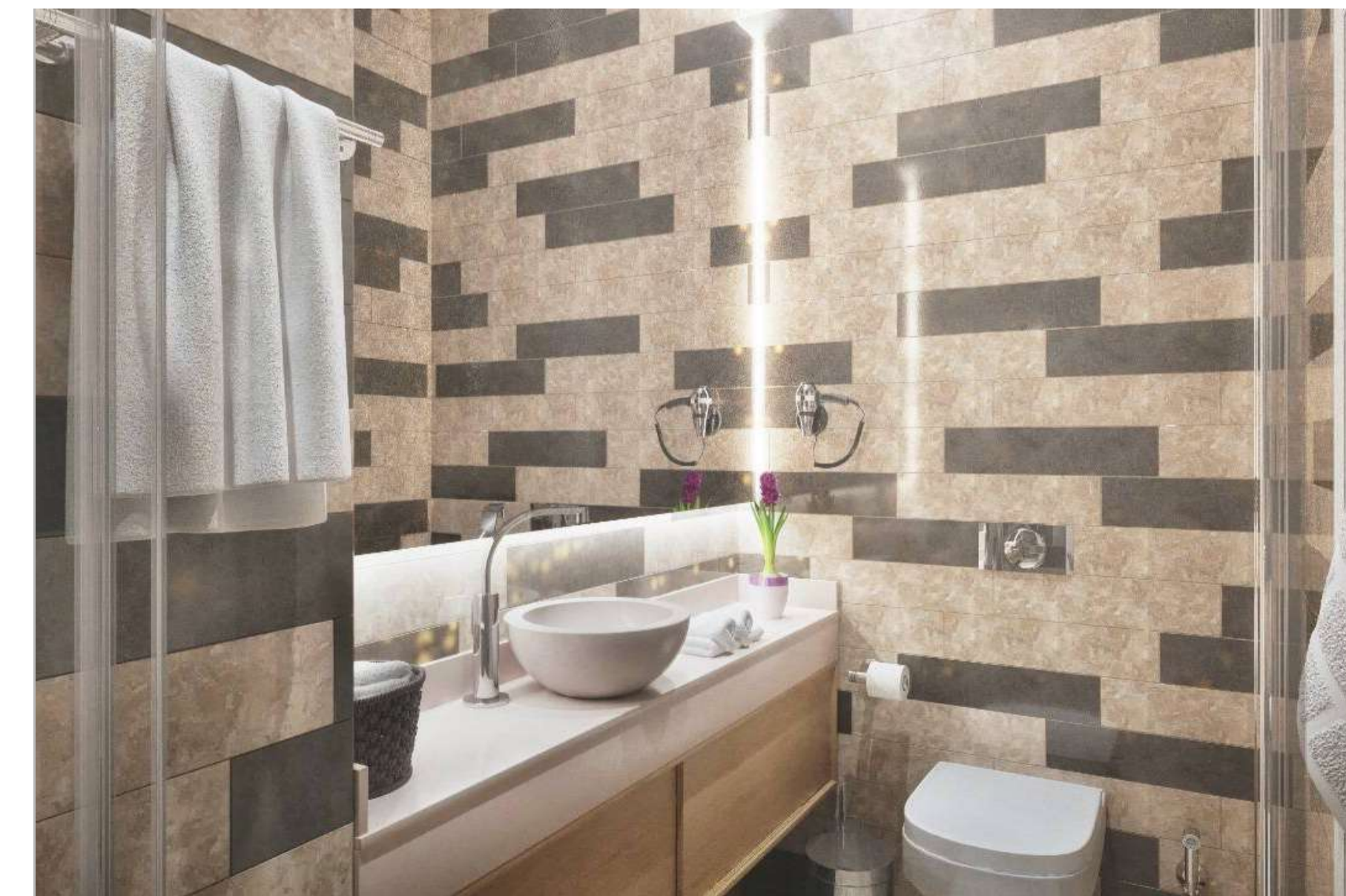


Imagine relaxed living in an exceptional one bedroom apartment featuring high quality furnishings, separate air-conditioning controls, flat screen televisions in the living and master bedroom, guest toilet, en-suite master bedroom, walk-in wardrobes, fully equipped kitchens and spacious balconies with spectacular views.





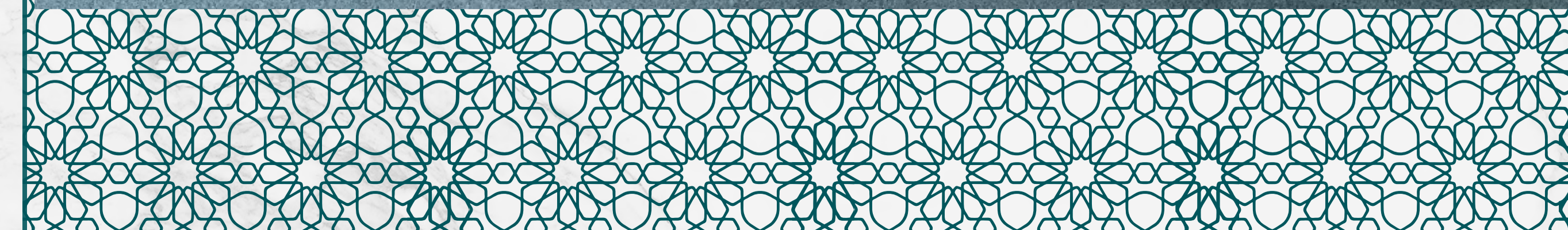
Studio apartments feature high quality furnishings maximizing space, flat screen televisions, fully equipped kitchens and floor-to-ceiling windows to maximize natural light and spacious balconies with spectacular views.





WELLNESS WITH A VIEW

Get your fitness on track in the state-of-the-art gymnasium at Seven Palm overlooking The Palm Boulevard. A modern gym fitted with the latest equipment and modern locker room and shower facilities. The gym has complimentary access to all residents and hotel guests. This gymnasium offers a haven of tranquility to everyone working out.

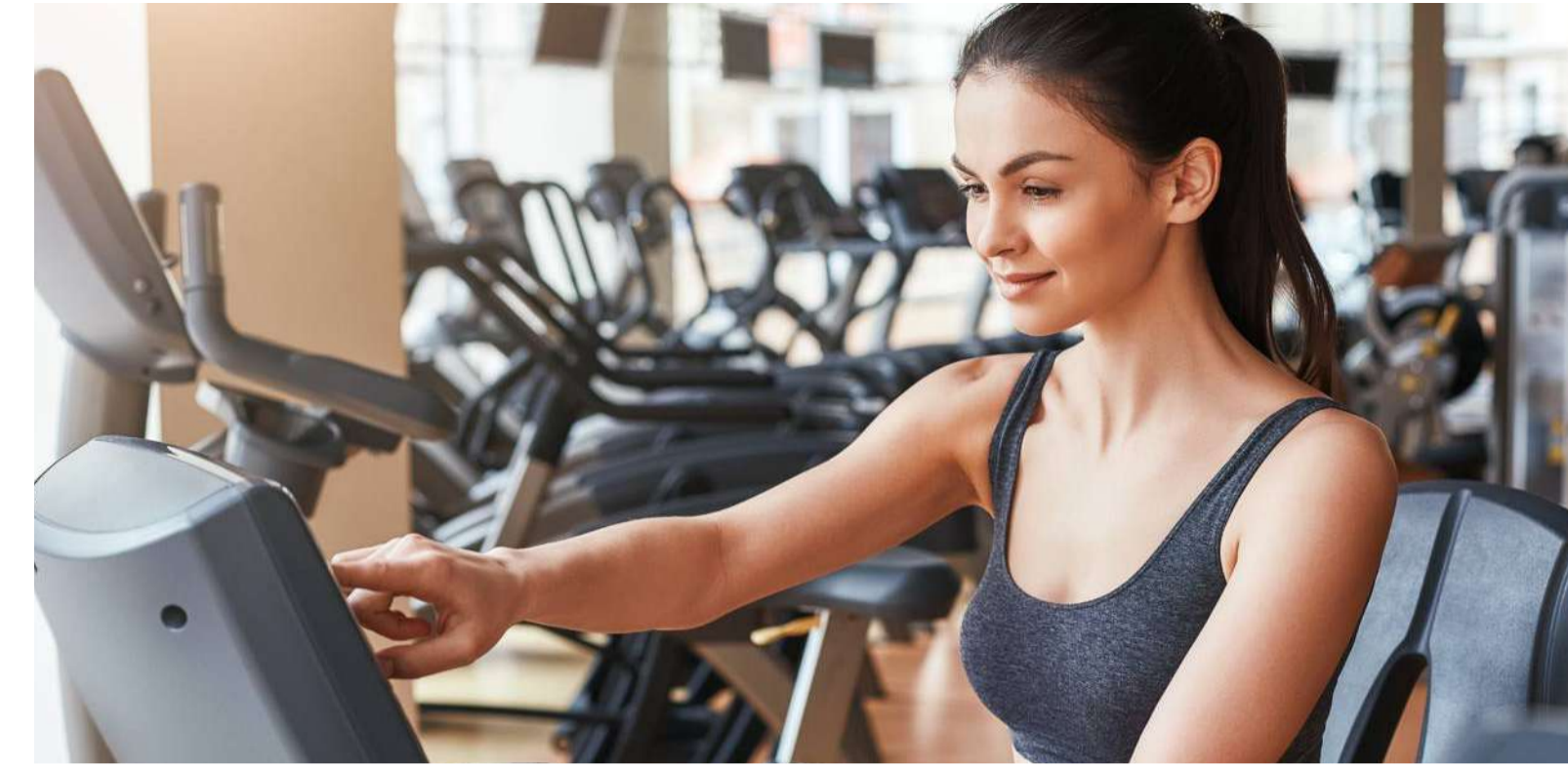


A FINE LIFE

Seven Palm's exquisite rooftop infinity pool and terrace offer an oasis of relaxation with a resort ambiance.

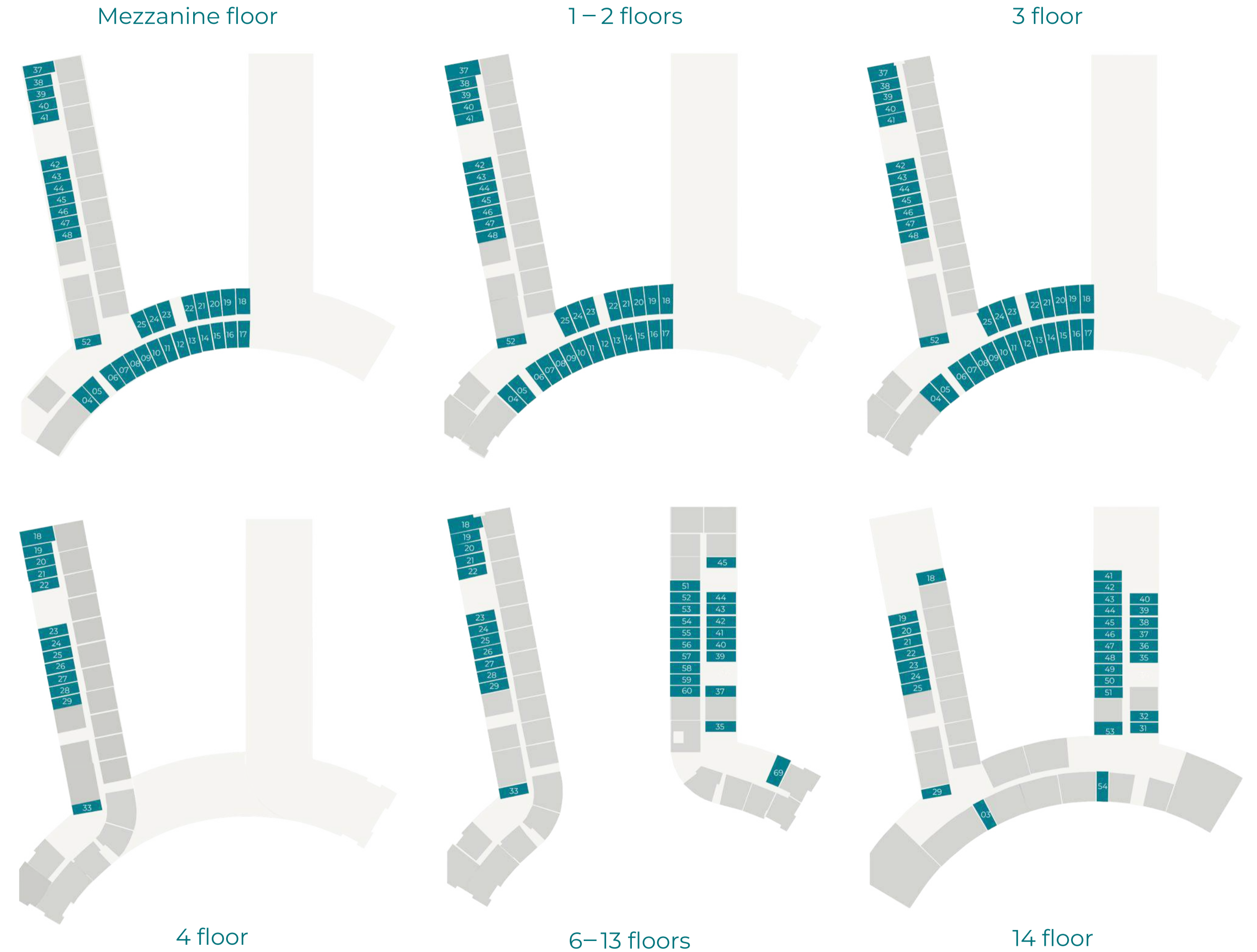
Access to the lower bridge level gives residents a quiet area to spend quality time with friends and family.

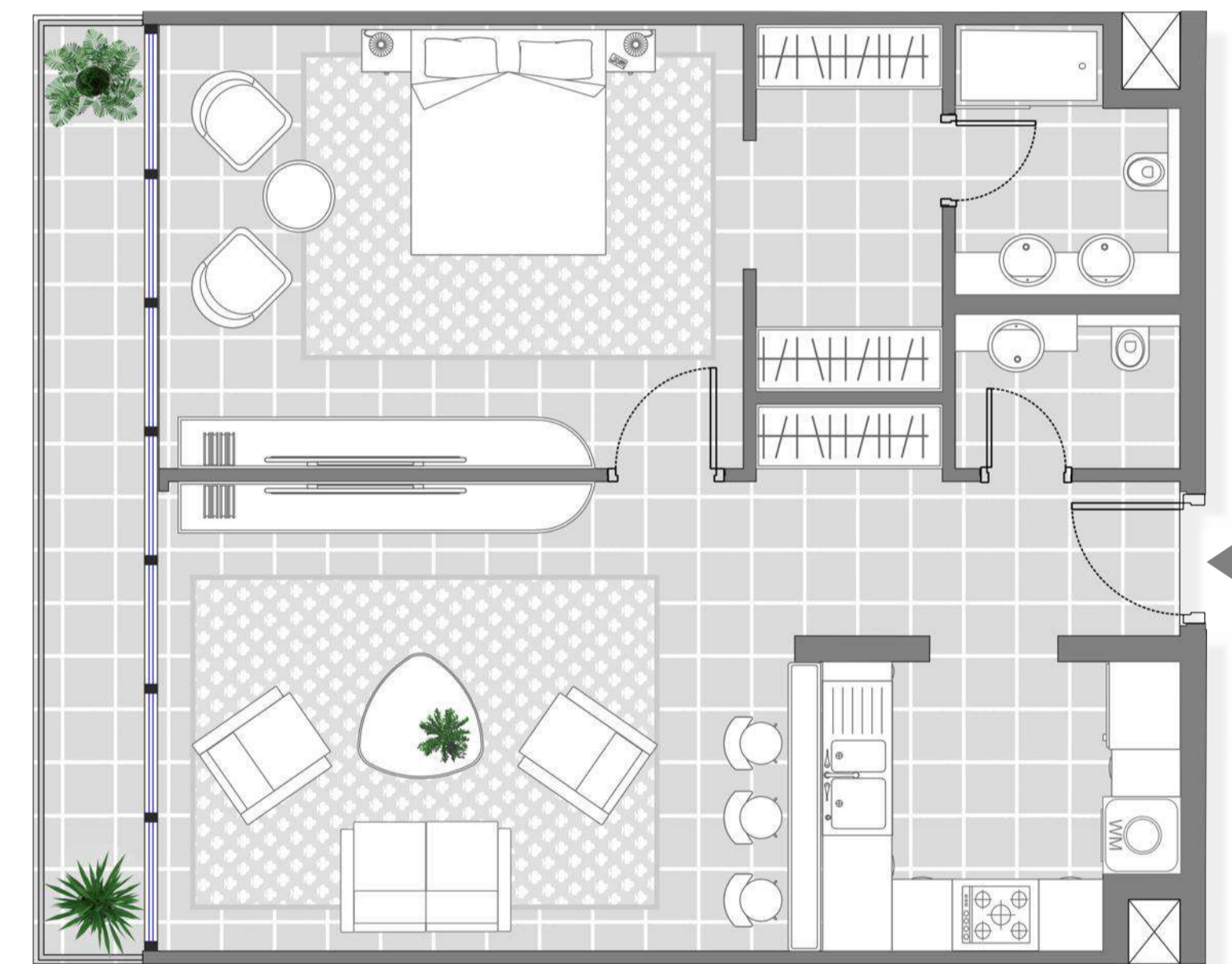
Seven Palm offers a full range of leisure, recreation and outdoor activities right on your doorstep plus convenience to residents with a wide selection of retail outlets including well-loved names for food, beauty and clothing.



STUDIO APARTMENTS

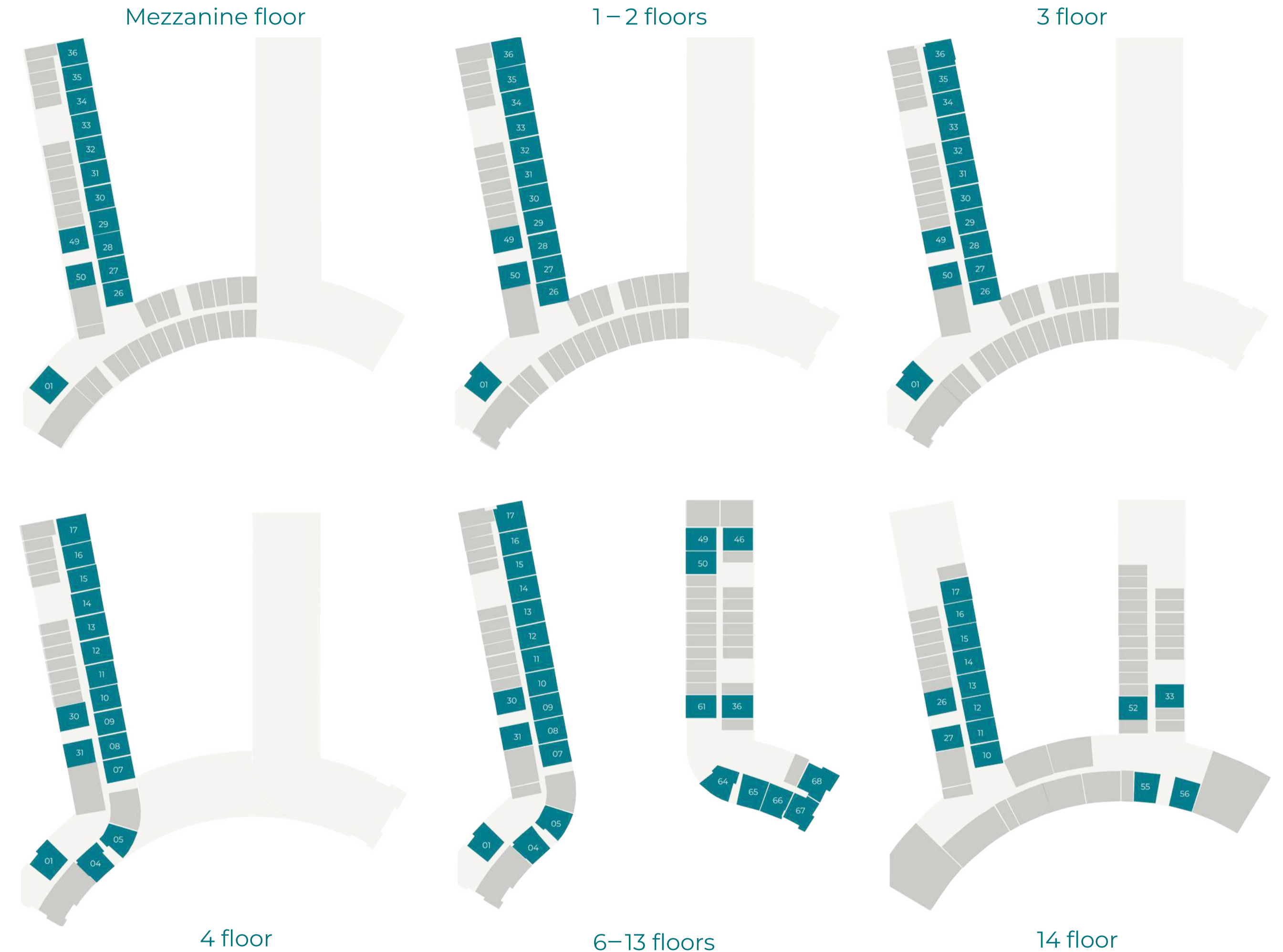
Suite Area: From 308 to 612 SQFT
 Balcony Area: From 18 to 100 SQFT
 Total Area: From 307 to 713 SQFT

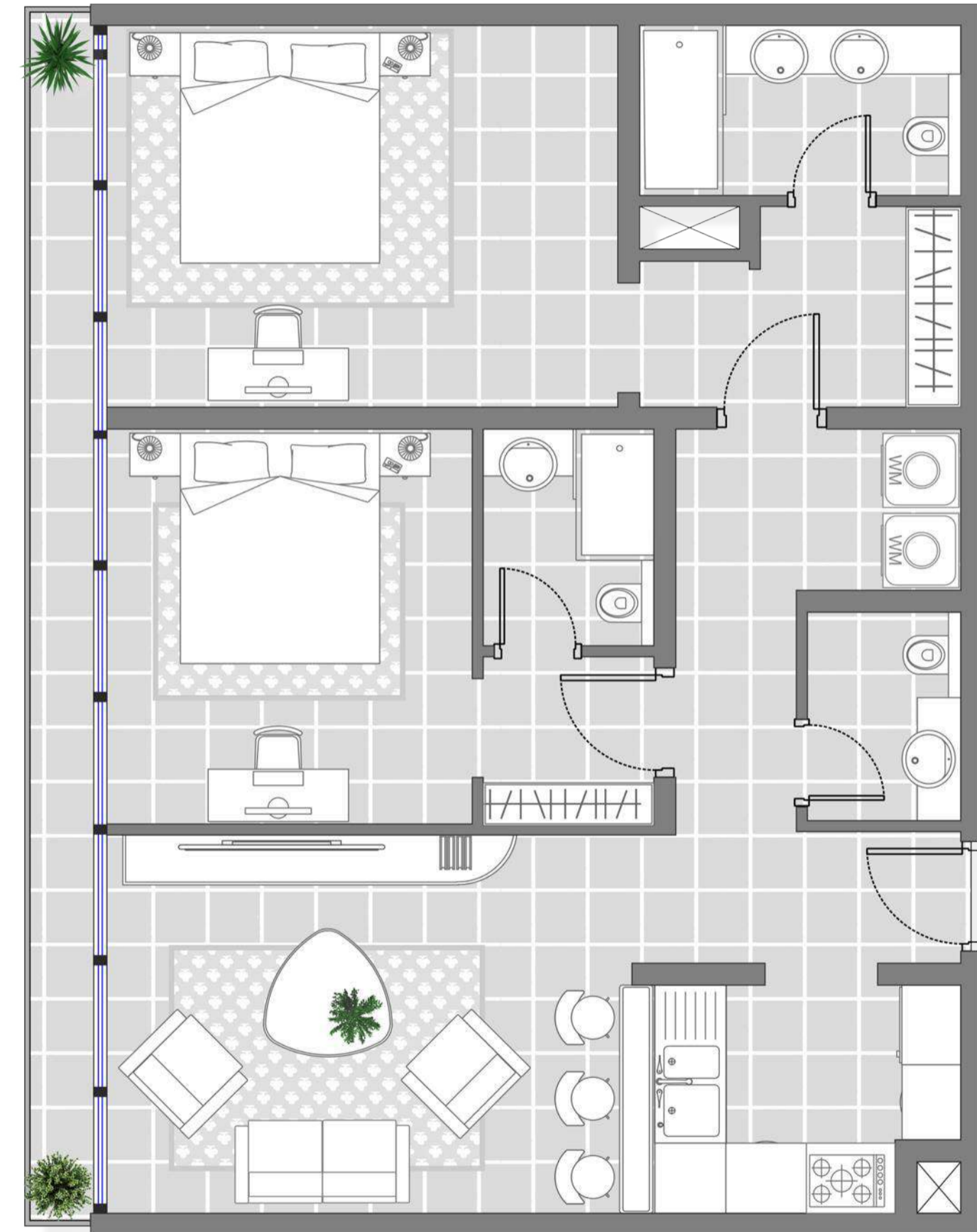




1 BEDROOM APARTMENTS

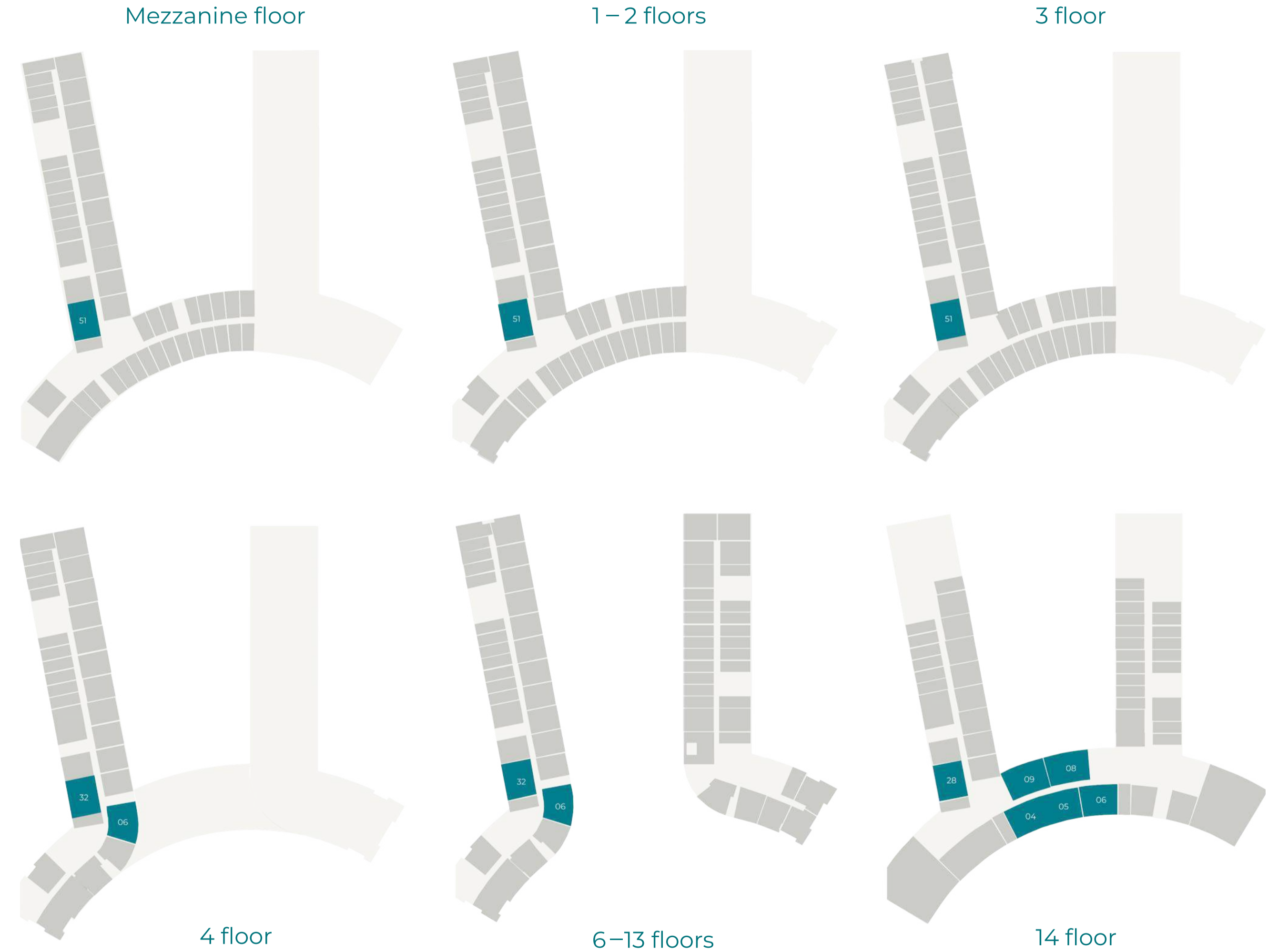
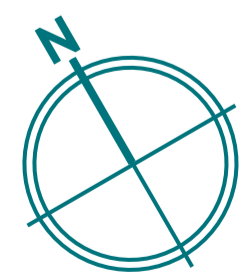
Suite Area: From 560 to 846 SQFT
 Balcony Area: From 33 to 174 SQFT
 Total Area: From 560 to 946 SQFT

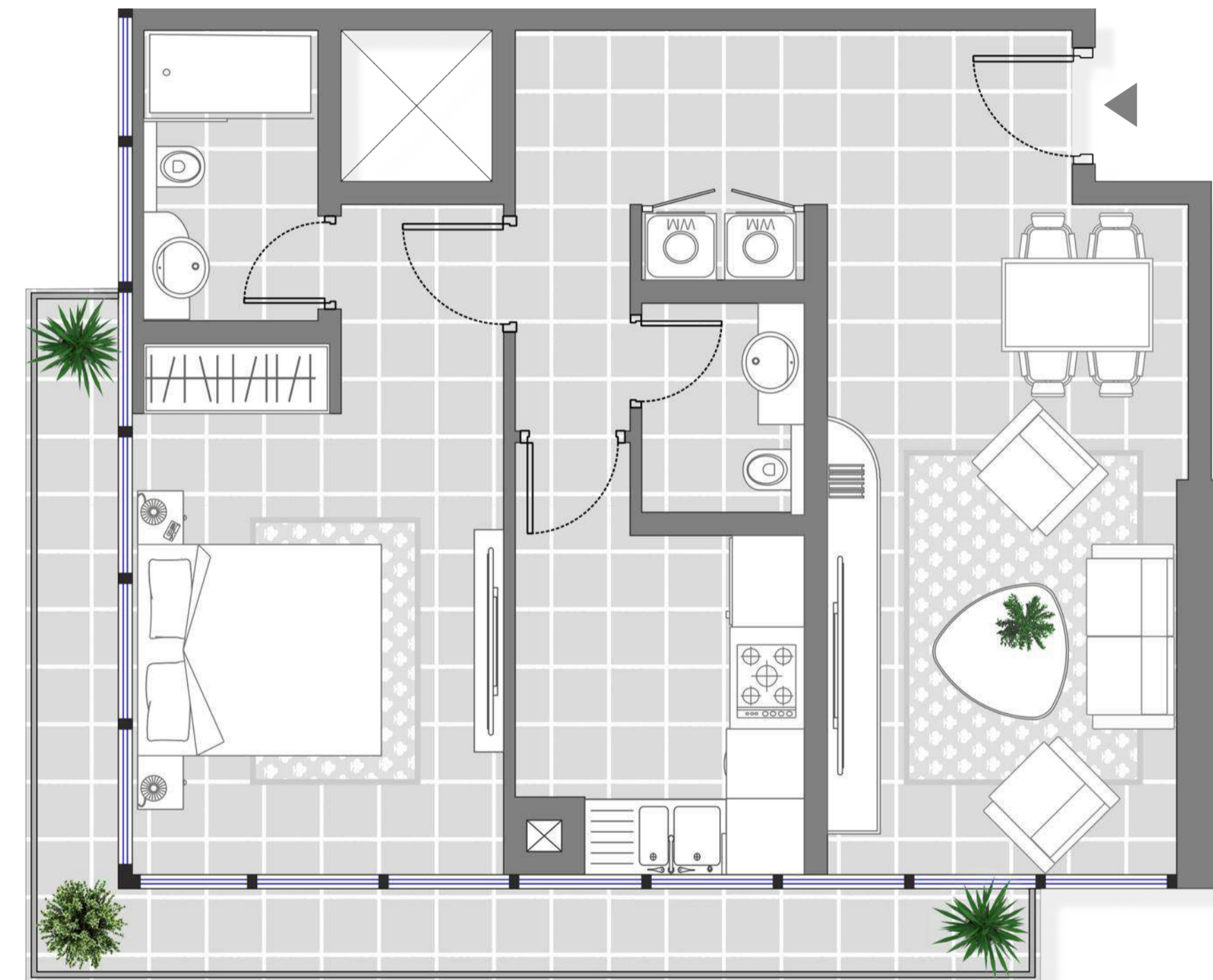




2 BEDROOM APARTMENTS

Suite Area: From 969 to 1080 SQFT
 Balcony Area: From 104 to 125 SQFT
 Total Area: From 1020 to 1202 SQFT



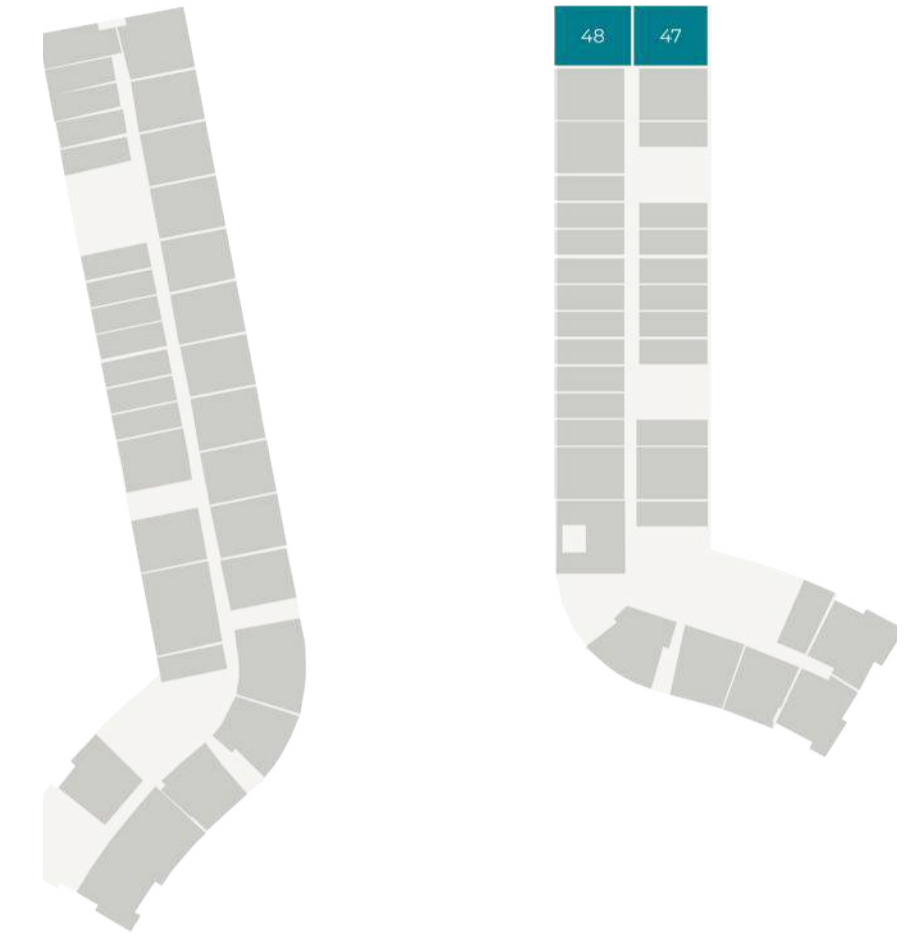


1 BEDROOM APARTMENTS

Suite Area: 722 SQFT
Balcony Area: 140 SQFT
Total Area: 862 SQFT

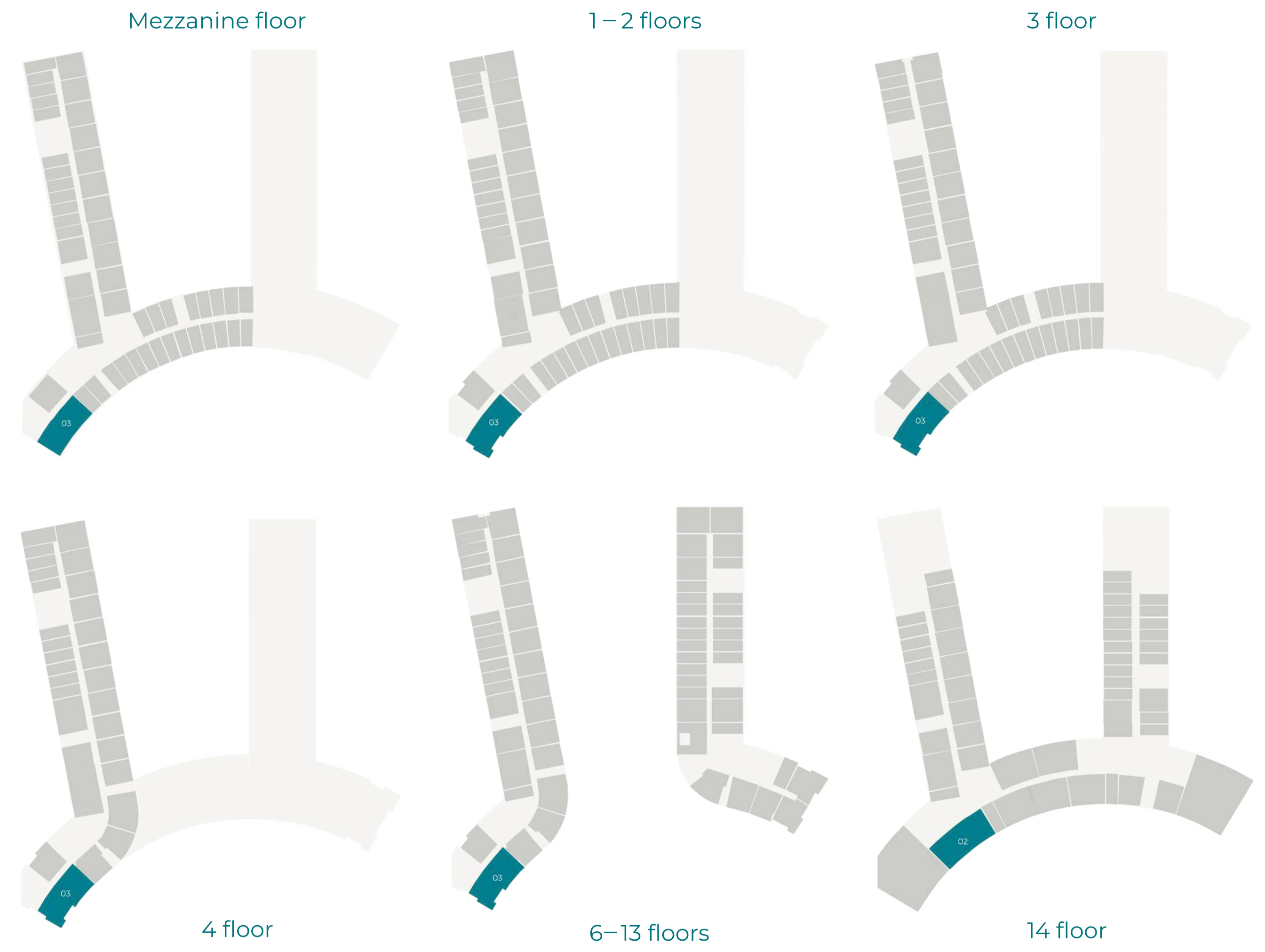
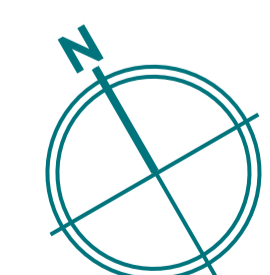


6-13 floors



3 BEDROOM APARTMENTS

Suite Area: 1,511 SQFT
 Balcony Area: 153 SQFT
 Total Area: 1,664 SQFT



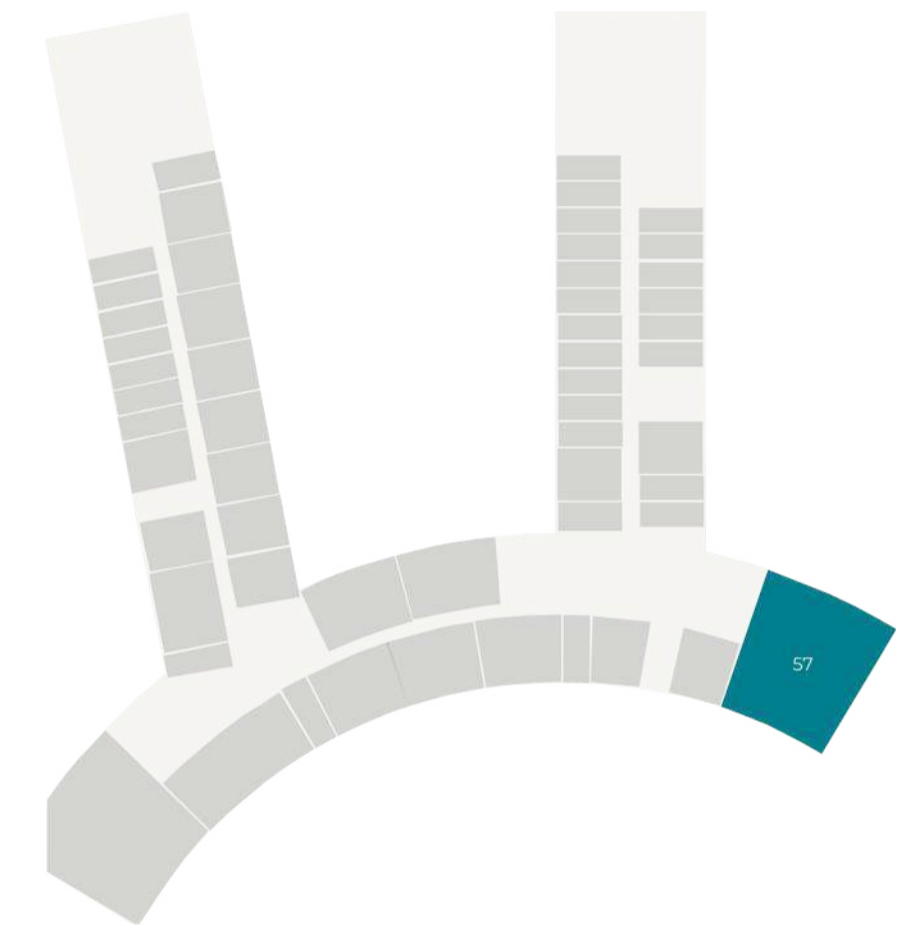


SOUTH PENTHOUSE

Total Area: 6,984 SQFT
Suite Area: 3,479 SQFT
Terrace Area: 3,505 SQFT



14 floor



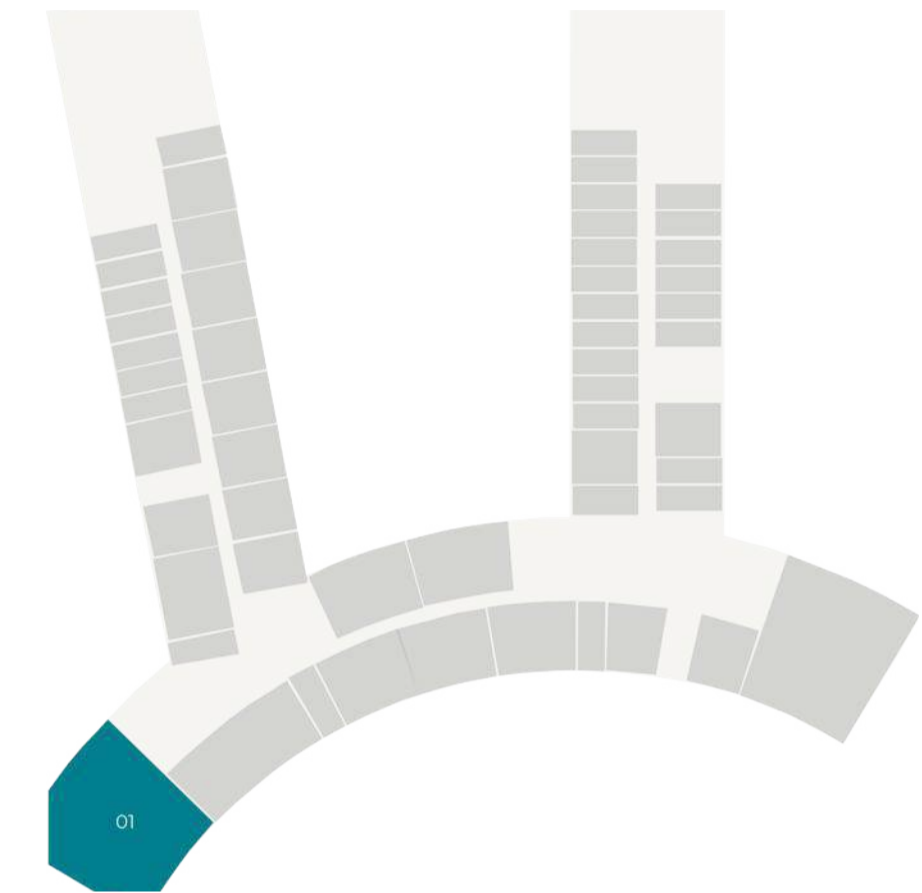


NORTH PENTHOUSE

Toral Area: 6,892 SQFT
Suite Area: 3,529 SQFT
Terrace Area: 3,363 SQFT



14 floor





CONTACT US

Our Sales Office is located at Dukes The Palm Hotel, Oceana Complex, Palm Jumeirah. Find out more at www.seventides.com/seven-palm or call us now to arrange your exclusive viewing.

Phone: 800 883 007 | +971 4 444 0700
Email: sales@seventides.com